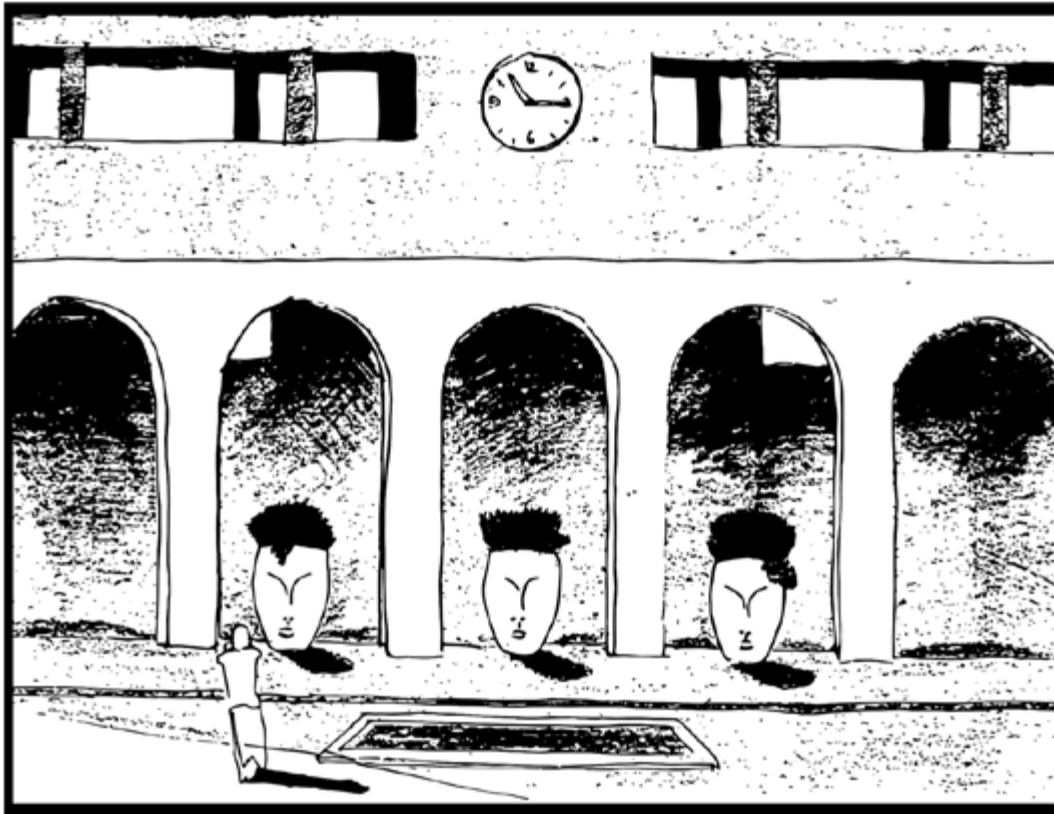


PRESS RELEASE - JANUARY 2025

MAISON ET OBJET

Paris, 16 - 20 Jan 2025

HALL 6 TODAY - Stand n G 137 (Ice Pavillion)



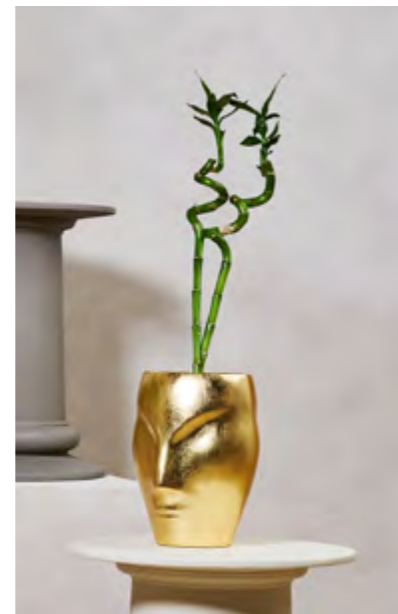
A NEW SURREALISM FOR OUTDOOR

Ellemura, a new Italian brand from Marche region, designer and manufacturer of outdoor decor, presents its new collection at Maison et Objet international exhibition for furnishing and decor in Paris, from 16 to 20 January 2025.

The inaugural production series is the collection of outdoor vases inspired by the creations of sculptor Constantin Brancusi, his enigmatic and elusive faces, drawn from a metaphysical hyperuranium and not yet defined by the materiality of the real world. Iconic images evoked to give shape to a concept of timeless beauty, lent to environments that aim to be enriched with a refined design coupled with art.

The collection expands with other elements of classical taste such as seating, small tables, and plant bases that evoke artifacts of sculptural and architectural elements of ancient Rome or the luminous Italian Renaissance.

The high formal quality of the objects is sustained by solidity, wear and weather resistance (UV, rain, salt) features that developed by R&D dept, specialized in green solutions for painting.



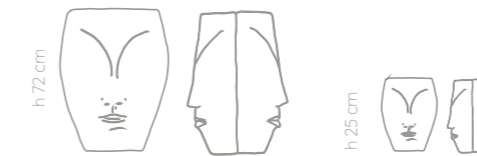
A NEW SURREALISM FOR OUTDOOR

CONSTANTIN
design Enrico Tonucci

Costantin is a vase pot for flowers and plants inspired by the pure forms of the great Bulgarian sculptor Constantin Brancusi (1876-1957) expressed in his famous stone faces. Two versions: one with face on the front and flat back, one with the double face, recalling the classic stylistic feature of the representation of Giano, the ancient Roman God looking at the past and the future. Available in sanded finishing with a textural effect.

Dimensions:
Constantin giano small 13,5 x 19 cm x h 25 cm;
Constantin giano medium 47 x 38 cm x h 72 cm;
Constantin medium 47 x 19 cm x h 72 cm;
Constantin big 75 x 60 cm x h 115 cm;

CONSTANTIN GIANO



CONSTANTIN





A NEW SURREALISM FOR OUTDOOR

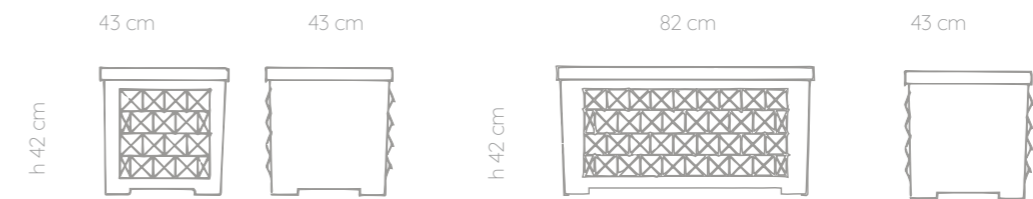
DIAMANTE

design Enrico Tonucci

Diamante is inspired by the intention to attribute a new cultural dress to a typical plant vase. In fact, it recalls the wall covering of Palazzo dei Diamanti, in Ferrara, engineered at the end of 1400 by architect Biagio Rossetti, commissioned by Sigismondo d' Este, Lord of the city. The ashlars, recalling the facets of the most precious stone, cover two opposite surfaces of the vase creating a geometrical game of lights and shadows contrasting the smooth lines of nature. Available in two different sizes and sanded finishing, it can also be placed on its metal stand.

Dimensions:
DIAMANTE 40 cm 43 x 43 x h 42 cm;
DIAMANTE 80 cm 82 x 43 cm x h 42 cm;

DIAMANTE



PRESS RELEASE - JANUARY 2025

MAISON ET OBJET
Paris, 16 - 20 Jan 2025
HALL 6 TODAY - Stand n G 137 (Ice Pavillion)



A NEW SURREALISM FOR OUTDOOR

SAC

design Viola Tonucci

From classic inspiration to casual solutions for modern life. Sac is a flower vase in the shape of a bag with a soft look made for "nomad" plants, easily movable of small and medium dimensions. Available in two sizes and various colours to create different combinations for different living spaces. Available in sanded finishing with a textural effect.

Dimensions:

SAC mini cm 32 x 27 x h 38

SAC cm 45 x 38 x h 40

PRESS RELEASE - JANUARY 2025

MAISON ET OBJET
Paris, 16 - 20 Jan 2025
HALL 6 TODAY - Stand n G 137 (Ice Pavillion)



A NEW SURREALISM FOR OUTDOOR

ROMA

design Enrico Tonucci

Inspired by the relics of the ancient Roman columns then adapted for different uses, Roma is a small outdoor table, plant pots base or even a plain seat. It's available in one size only and sanded finishing, it appears like a small column with base and a quite flattened capital that is also slightly concave to contain liquid leaks.

Dimensions:

ROMA diameter 48 x h 48

PRESS RELEASE - JANUARY 2025

MAISON ET OBJET
Paris, 16 - 20 Jan 2025
HALL 6 TODAY - Stand n G 137 (Ice Pavillion)



DESIGNERS

Quality and professionalism of design are granted by the collaboration with historic design studio TONUCCIDESIGN, founded in 1970 and lead by Enrico and Viola Tonucci. Tonuccidesign has curated the Artistic Director of Ellemura brand and the coordinated image communication, as well as the design and project of the models.

PRESS RELEASE - JANUARY 2025

MAISON ET OBJET
Paris, 16 - 20 Jan 2025
HALL 6 TODAY - Stand n G 137 (Ice Pavillion)



COMPANY PROFILE

Ellemura is a young brand operating since 2019 in design and production of innovative decorative objects for outdoor and indoor spaces, for commercial and private use. The brand has a strong collaboration with Lumian Color, a 20 years old company operating in artisanal painting, with decorations and finishing of excellence, whose competence grants for Ellemura products high quality. High skilled craftsmanship applied on each shape and material, handmade and hand finished, is Lumia Color excellence blending with Ellemura design creativity. A virtuous combination that creates shapes from beauty and pieces from unique matters that are not reproducible. The founder and leader of ELLEMURA is Luca Muratori. After his graduation in Economics and many years of experience with multinational corporations, in 2021 he went back to his hometown determined to give new impulse to the family business towards renewed productions and operational process, following the path of art and craftsmanship culture of his territory.

www.ellemura.it